

UPCOMING EVENTS...

OCTOBER-DECEMBER 2024

**3RD
OCTOBER**

13.00-15.00

Bike hire and ride



Join us for a bike ride in Telford Town Park.
You will be hiring a bike for one hour where we will take a leisurely ride whilst taking in the beautiful scenery.
We will meet at Southwater one, outside of the library for 1pm. Ride will be from 1.30-2.30
Pre booking essential as limited spaces available



**£5.00
PER
PERSON**

**7TH
OCTOBER**

11.00-13.00

Autism Friendly Cookery Course

Book your space on our four week cookery course.
Learn how to prepare easy healthy meals that focus on reducing food waste, saving time and energy.

For those 16-18 with a diagnosis and 18 and over with a diagnosis or waiting for a diagnosis.

**21ST
OCTOBER**

**14TH
OCTOBER**

Pre Booking essential-4 spaces

32 High Street, Madeley, Telford, TF7 5AR



**28TH
OCTOBER**

**10TH
OCTOBER**

13.00-15.00

Wellness Walk

Please join us for a gentle walk around Telford Town Park where we will meet at Southwater one and walk across to the park.

if the weather is cold don't forget to wrap up warm.



**17TH
OCTOBER**

17.30-19.00

Supper Club at Madeley Wellbeing Cafe

Join us for an evening of tasty food, the opportunity to meet new friends and socialise, in a safe and relaxing environment.

Each month we will have a new two course menu with Vegetarian/Vegan option available.

£10 per person with a soft drink included

Booking essential



32 High Street, Madeley, Telford, TF7 5AR



If you would like to attend any of our Upcoming Social Events, please contact us via. email; admin@telfordautismhub.org.uk or call us directly on 01952 916109.

OCTOBER-DECEMBER 2024

18TH
OCTOBER

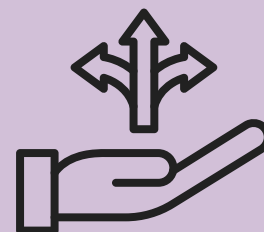
Information, Advice and Guidance Drop-in

Meet a range of professionals who can provide support and Guidance

11.00-13.00



- Education Employment Advisory Support Team (EEAST)
- Telford Mind
- Adult Social Care
- The Healthy Lifestyles Team Telford
- Job Centre Plus



For those 16-18 with a diagnosis and 18 and over with a diagnosis or waiting for a diagnosis.

Family Zone, Suite 12 & 15 Hazledine House, Central Square, Telford Centre, Telford, Shropshire, TF3 4JL

24TH
OCTOBER

The Wrekin Forest Pumpkin Activity



13.00-15.00

Come join us at the Wrekin Forest Pumpkin Patch. Pumpkins vary in price dependant on size between £2-£10 and it is free entry to the patch. There is a café with homemade cakes and cookies. There are wheelbarrows to use to collect your pumpkins from the patch for ease,

- Directions - **Sydney House Farm, Kynnersley TF6 6EB**. Please follow the pumpkin signs to get to us, they are not accessible from the A442! Satnav may try and direct you in via the A442 however you need to go to crudgington crossroads, head along the B5062 towards Newport, take the second right and you should see our signs from there. Otherwise we are accessible through Preston-upon-the-Weald moors please follow the pumpkin signs again.

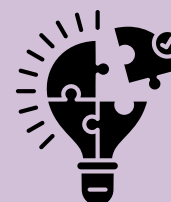


30TH
OCTOBER

Anstice advice and Information Stand

Please join a member of the Autism Hub Staff at the Anstice in Madeley for a drop-in information and guidance session on pre and post diagnostic ASD support.

10.00-13.00



The Anstice Madeley, Park Avenue, TF7 5BB



If you would like to attend any of our Upcoming Social Events, please contact us via. email; admin@telfordautismhub.org.uk or call us directly on 01952 916109.

OCTOBER-DECEMBER 2024

**30TH
OCTOBER**

9.00-18.00



One Great Day Celebrations



Telford Shopping Centre are supporting Telford CVS in raising funds to provide services to children and adults living across Telford. There will be fun activities including a face painter, Balloon modelling, raffle and tombola. All proceeds from the day will go to Telford and Wrekin CVS.

Pop along and get involved, lots for all ages to do
Location: Sherwood Square



**30TH
OCTOBER**

17.30-19.00

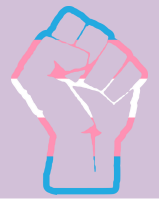


Autistic Women's Support Group (WAG)

Our Autistic Women's support group is a safe and friendly space with like minded individuals, so please join us in a relaxed, accepting group for a drink & a chat among others with shared experiences.

We invite individuals who identify as female, Femme, presenting or assigned at birth.

The wakes, Theatre Square, Oakengates, Telford, TF2 6EP



**31ST
OCTOBER**

10.00-12.00

13.00-15.00

How Autistic people process information Workshop

Please join us our workshop delivered by our Autism West Midlands Specialist.

The same Workshop will be delivered twice today so please book in for just one of the times as places are limited to 15 people per workshop.

Family Zone, Suite 12 & 15 Hazledine House, Central Square, Telford Centre, Telford, Shropshire, TF3 4JL



**31ST
OCTOBER**

17.00-18.30

Autistic Youth Group

If you are aged 16-24 then please join us for our monthly activity.

Activity to be decided nearer the time so look out for updates.



If you would like to attend any of our Upcoming Social Events, please contact us via. email; admin@telfordautismhub.org.uk or call us directly on 01952 916109.

OCTOBER-DECEMBER 2024

**1ST-28TH
NOVEMBER**

Art Exhibition at Western Park

During the month of November, TWCVS have been invited by Weston Park to exhibit art pieces that our beneficiaries have created. The Art Exhibition will take place in the Rose Paterson Arty Gallery at Weston Park from Friday 1st November until Thursday 28th November 2024.

We have asked our beneficiaries to create Art centred around their response to our values: **INVOLVING, INSPIRING and SUPPORTING**, The pieces incorporate the theme of nature as an underlying component of their work. Artwork has been expressed through a variety of mediums, paintings, photography and poetry to name a few.



The Gallery is open daily from 11am until 4pm



**4TH
NOVEMBER**

Autism Friendly Cookery Course

Book your space on our four week cookery course. Learn how to prepare easy healthy meals that focus on reducing food waste, saving time and energy.

For those 16-18 with a diagnosis and 18 and over with a diagnosis or waiting for a diagnosis.

Pre Booking essential-4 spaces

32 High Street, Madeley, Telford, TF7 5AR



**18TH
NOVEMBER**

**25TH
NOVEMBER**

11.00-13.00

**11TH
NOVEMBER**

£ - There will be a cost involved for this event



If you would like to attend any of our Upcoming Social Events, please contact us via. email; admin@telfordautismhub.org.uk or call us directly on 01952 916109.

OCTOBER-DECEMBER 2024

**7TH
NOVEMBER**

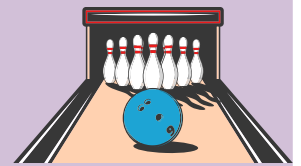
Tenpin Bowling

Join us for a game of bowling or challenge our team to a snooker match. We will be meeting outside the Ten Pin Bowling alley.

Cost - 2 games of Bowling for £6.95 or two games of Bowling and either a chicken burger, Vegetarian burger or cheese burger and chips £10.00
Snooker - £1.50 a game

13.00-15.00

Please book your space for this as we have limited spaces available.



**11TH
NOVEMBER**

Supper Club at Madeley Wellbeing Cafe

Join us for an evening of tasty food, the opportunity to meet new friends and socialise, in a safe and relaxing environment. Each month we will have a new two course menu with Vegetarian/Vegan option available.

£10 per person with a soft drink included
Booking essential

17.30-19.00

32 High Street, Madeley, Telford, TF7 5AR



**15TH
NOVEMBER**

Information, Advice and Guidance Drop-in

Meet a range of professionals who can provide support and Guidance

- Education Employment Advisory Support Team (EEAST)
- Telford Mind
- Adult Social Care
- The Healthy Lifestyles Team Telford
- Job Centre Plus

11.00-13.00

For those 16-18 with a diagnosis and 18 and over with a diagnosis or waiting for a diagnosis.

Family Zone, Suite 12 & 15 Hazledine House, Central Square, Telford Centre, Telford, Shropshire, TF3 4JL



£ - There will be a cost involved for this event



If you would like to attend any of our Upcoming Social Events, please contact us via. email; admin@telfordautismhub.org.uk or call us directly on 01952 916109.

OCTOBER-DECEMBER 2024

21ST
NOVEMBER

Join the Autism Hub and Healthy lifestyles team for a 'DO IT FOR HEALTHIER ME EVENT

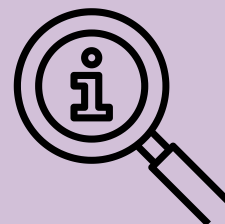
13:00 - 15:00

The Healthy Telford pledge is a 12-week email campaign, asking residents to 'do it for' someone or something and commit to a habit building 12 weeks of learning and changing to become a healthier version of themselves. By signing up to the pledge and email campaign, residents will receive twice weekly emails that share information around managing a healthier weight, quitting smoking, improving emotional wellbeing and more. The emails are bitesized but informative, with the aim of residents self-helping to manage their physical and emotional wellbeing.

Family Zone, Suite 12 & 15 Hazledine House, Central Square, Telford Centre, Telford, Shropshire, TF3 4JL

27TH
NOVEMBER

Anstice Advice and Information stand



10.00-13.00

Please join a member of the Autism Hub Staff at the Anstice in Madeley for a drop-in information and guidance session on pre and post diagnostic ASD support.

The Anstice Madeley, Park Avenue, TF7 5BB



27TH
NOVEMBER

Autistic Women's Support Group (WAG)



17.30-19.00

Our Autistic Women's support group is a safe and friendly space with like minded individuals, so please join us in a relaxed, accepting group for a drink & a chat among others with shared experiences.

We invite individuals who identify as female, Femme, presenting or assigned at birth.

The wakes, Theatre Square, Oakengates, Telford, TF2 6EP



If you would like to attend any of our Upcoming Social Events, please contact us via. email; admin@telfordautismhub.org.uk or call us directly on 01952 916109.

OCTOBER-DECEMBER 2024

**28TH
NOVEMBER**

Disclosure Workshop

Please Join us our workshop delivered by our Autism West Midlands Specialist. This workshop will cover how to tell people that you are Autistic.

10.00-12.00

The same Workshop will be delivered twice today so please book in for just one of the times as places are limited to 15 people per workshop.

13.00-15.00

Family Zone, Suite 12 & 15 Hazledine House, Central Square, Telford Centre, Telford, Shropshire, TF3 4JL



**28TH
NOVEMBER**

Youth Group

If you are aged 16-24 then please join us for our monthly activity which will be decided nearer the time.

17.00-18.30



**2ND
DECEMBER**

Autism Friendly Cookery Course

Book your space on our four week cookery course. Learn how to prepare easy healthy meals that focus on reducing food waste, saving time and energy.

11.00-13.00

For those 16-18 with a diagnosis and 18 and over with a diagnosis or waiting for a diagnosis.



Pre Booking essential-4 spaces

32 High Street, Madeley, Telford, TF7 5AR

**9TH
DECEMBER**

**16TH
DECEMBER**

**5TH
DECEMBER**

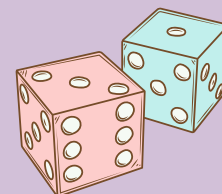
Boardroom Gaming Cafe

Enjoy a beverage and a selection of various board games at the Boardroom Gaming Cafe in Wellington with the Adult Autism Hub community and team.

13.00-15.00

Cost - £3.00 per person

Address - 13 New Street, Wellington, Telford. TF1 1LU



If you would like to attend any of our Upcoming Social Events, please contact us via. email; admin@telfordautismhub.org.uk or call us directly on 01952 916109.

OCTOBER-DECEMBER 2024

**11TH -17TH
DECEMBER**

Christmas Gift Wrapping Event Telford Shopping Centre

For a donation Please bring along your festive gifts for one of our staff to wrap for you.



All proceeds from the day will go to
Telford and Wrekin CVS

Wednesday 11th December 9-8

Thursday 12th December 9-8

Friday 13th December 9-8

Saturday 14th December 9-6

Sunday 15th December 10-4.30

Monday 16th December 9-8

Tuesday 17th December 9-8



D O N A T E



Christmas Crafts Activity

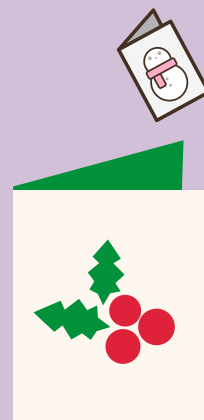
**12TH
DECEMBER**

Please join the Autism Hub staff for A festive
card and gift tag making art session.

13.00-15.00



**Family Zone, Suite 12 & 15 Hazledine House, Central
Square, Telford Centre, Telford, Shropshire, TF3 4JL**



£ - There will be a cost involved for this event



If you would like to attend any of our Upcoming Social Events,
please contact us via. email; admin@telfordautismhub.org.uk
or call us directly on 01952 916109.

OCTOBER-DECEMBER 2024

**18TH
DECEMBER**


17.30-19.00

Autistic Women's Support Group (Wag)

Our Autistic Women's support group is a safe and friendly space with like minded individuals, so please join us in relaxed, accepting group for a drink & a chat among others with shared experiences.


We invite individuals who identify as female, Femme presenting or assigned female at birth.

Address - The Wakes, Theatre Square, Oakengates, Telford, TF2 6EP



**19TH
DECEMBER**

13.00-15.00




Festive meal at the Wrekin Giant

Please join the Autism Hub staff for A festive 2 or 3 course meal.

2 courses £17.99 or upgrade to a 3 course for £3.00 extra

Pre-booking essential
£5.00 Deposit and pay the remainder on the day.

Address - 11 Southwater Way, Telford TF3 4NR. Located Southwater Square.



**20TH
DECEMBER**

Information, Advice and Guidance Drop-in

Meet a range of professionals who can provide support and Guidance

- Education Employment Advisory Support Team (EEAST)
- Telford Mind
- Adult Social Care
- The Healthy Lifestyles Team Telford
- Job Centre Plus

For those 16-18 with a diagnosis and 18 and over with a diagnosis or waiting for a diagnosis.

Family Zone, Suite 12 & 15 Hazledine House, Central Square, Telford Centre, Telford, Shropshire, TF3 4JL



£ - There will be a cost involved for this event



If you would like to attend any of our Upcoming Social Events, please contact us via. email; admin@telfordautismhub.org.uk or call us directly on 01952 916109.